





TABLE OF CONTENTS

Australian Building Standards	04
Energy Efficiency	05
Sliding Doors	06
Bi-Fold Doors	07
French and Entry Doors	08
Sliding Windows	09
Awning Windows	10
Bi-Fold, Fixed & Casement Windows	11
Technical Specification Drawings	12
Guarantee & Maintenance	18

The Upton Group continue to supply building materials into the Queensland, New South Wales, Victorian, and Tasmanian markets, and have done so for more than 40 years.

As the exclusive Australian distributor for SHIELD doors and windows, we offer range of quality aluminum double glazed doors and windows. Shield produce a range of standardised sizes available to purchase off the shelf as well as a custom fabricated service to meet individual job requirements.

This combination of custom and standard offerings provides for a broad range of models, making us the ideal supplier for builders of quality homes from big to tiny homes, and DIY customers.

With more than twenty years in the window and door market, we continue to deliver on our promise of personalised service at an affordable price.

SHIELD's range of residential windows and doors comply with Australian Standards permitting their use in residential applications.

These include:

- \ AS 2047 Windows in Buildings - selection and installation
- \ AS 1288 Glass in Buildings
- \ AS 3959 Bush fire Code

Windows and Doors AS 2047

The SHIELD range of double-glazed windows and doors conforms to AS 2047 which permits their use in residential applications throughout Australia. AS 2047 certifies our product range meets relevant N and C performance guidelines. For more information on the standards required, please consult the AWA or your nearest SHIELD representative.

Glass in Buildings AS 1288

AS 1288 governs glass used in residential buildings. SHIELD doors and windows use grade A safety glass in all door and window products to ensure appropriate standards are met. For custom products, SHIELD will alter the glazing configurations to conform to relevant standards.

Construction in Bush fire Prone Areas AS 3959 - 2009

Please consult your SHIELD representative if constructing in a bush fire prone area to determine a suitable product based on your assessed BAL rating. This standard has been implemented to govern construction within the areas deemed at risk for bush fires and your local council will be able to help you with more information.



As energy costs continue to rise and environmental awareness and sensitivity become increasingly important, there has been a marked move towards double-glazing as an efficient, cost-effective method for reducing the energy consumption of new and existing homes. As more than 40% of heating and cooling energy is lost through doors and windows, improving thermal efficiency has a direct impact on the energy use of your home. This increases comfort as temperature variance is reduced, as well as a reduction in annual heating and cooling costs.

SHIELD doors and windows have emphasised the importance of energy efficiency by offering only double-glazed products with emphasis placed on thermally improved aluminium frames. The range of windows and doors on offer at SHIELD is rated by the Window Energy Rating Scheme (WERS).

Managed by the Australian Window Association, WERS provides a standard platform to measure the energy performance of windows and doors. WERS measures the heat transferred through a window using a U Value and Solar Heat Gain Coefficient. The lower the U Value and SHGC, the better the level of insulation provided.

- \ U Value - This is the measurement of air-to-air thermal conductance, or insulation between indoors and outdoors, through the glass. The lower the number, the better the insulation.
- \ SHGC (Solar Heat Gain Coefficient) - The proportion of directly transmitted and absorbed solar energy that enters into a building's interior. The lower the number, the better the solar control.

The clever use of windows and doors to significantly increase natural light in your home will reduce lighting costs, whilst the use of insulated glass units (double glazing) will aid in the reduction of heating and cooling costs. Furthermore, double glazed and argon gas filled cavities will offer significant noise reduction advantages when used as one component of the total insulation package.

If sound-proofing is required, we can achieve up to 38 decibels. Please consult your SHIELD representative to assist you.

SLIDING DOORS

- \ Economical, low maintenance aluminium profile
- \ Double glazed configurations with 9mm argon gas sealed units
- \ Available in
 - Single (2-panel)
 - Stacking (3-panel)
 - Twin (centre opening 4 panels)
 - Twin stacking (centre opening 6 panels)
- \ Corner gasket sealing
- \ Twin dual-sealed ball bearing rollers for superior smooth panel action is housed within high-quality cassettes
- \ Flyscreen solutions available for order on all doors
- \ Silicon wet seal gives a more durable design

Sliding doors are an economical, functional, low maintenance choice for door openings. The SHIELD range of double-glazed sliding doors provides these qualities and improved energy performance and reliability to form a market-leading sliding door.

SHIELD sliding doors are available in both standard sizes (see size charts) and custom sizes.

Our standard range allows for openings up to 5.2m wide and custom doors can be produced up to 6m. SHIELD sliding doors can also be produced in different heights to fit both new and existing builds.

We offer two ranges of sliding doors:

- An off the shelf range of 2, 3, 4 panel configurations
- A premium custom built range allowing openings up to 6m



BI-FOLD DOORS

- \ Multiple sizing and door configurations to suit almost all patio openings
- \ Commercially inspired design for increased resilience and minimal maintenance
- \ Multiple sealing points for weather-exposed settings
- \ 9mm argon gas gap glazing configuration for increased energy efficiency
- \ A rebated bottom sill allows an obstruction-free view
- \ Available in standard sizes from 1.8 to large 5.2m openings
- \ Silicon wet seal gives a more durable design
- \ Custom sizes are also available

SHIELD's signature bi-fold doors known for their functionality, stylish presentation, a superb quality that bring the outdoors in and the indoors out.

The SHIELD range of bi-fold doors has been designed and developed for a simplistic and modern style that is easy to use. Combining the Bi-fold concept with standard sizes allows for a cost-effective folding door solution.

Employing a 'semi commercial' profile with heavy-duty hardware, SHIELD bi-fold doors have been designed with longevity in mind.

As a low maintenance design, bi-fold doors use an energy-efficient glazing configuration with argon gas filled double-glazing to offer end users high performing units.



FRENCH & ENTRY DOORS

- \ Semi-commercial inspired frame design allows for durable, low maintenance door opening
- \ Extra heavy-duty adjustable hinges
- \ 9mm argon gas units allow increased energy efficiency
- \ Keyed lock solution
- \ Silicon wet seal gives a more durable design
- \ Can be coupled with fixed and awning window frames

A durable low maintenance solution designed with energy efficiency in mind. Paired with various window combinations, French and Entry doors can accommodate nearly all openings.

French settings allow an easy access dual door opening that provides straight forward retractable fly screening solutions. French and Entry settings combine easily with various windows to produce customised openings.

Entry doors are produced in a standard external opening configuration. With the use of a subsill, these doors can be inverted to open internally.

Consult with your SHIELD representative for more information.

SLIDING WINDOWS

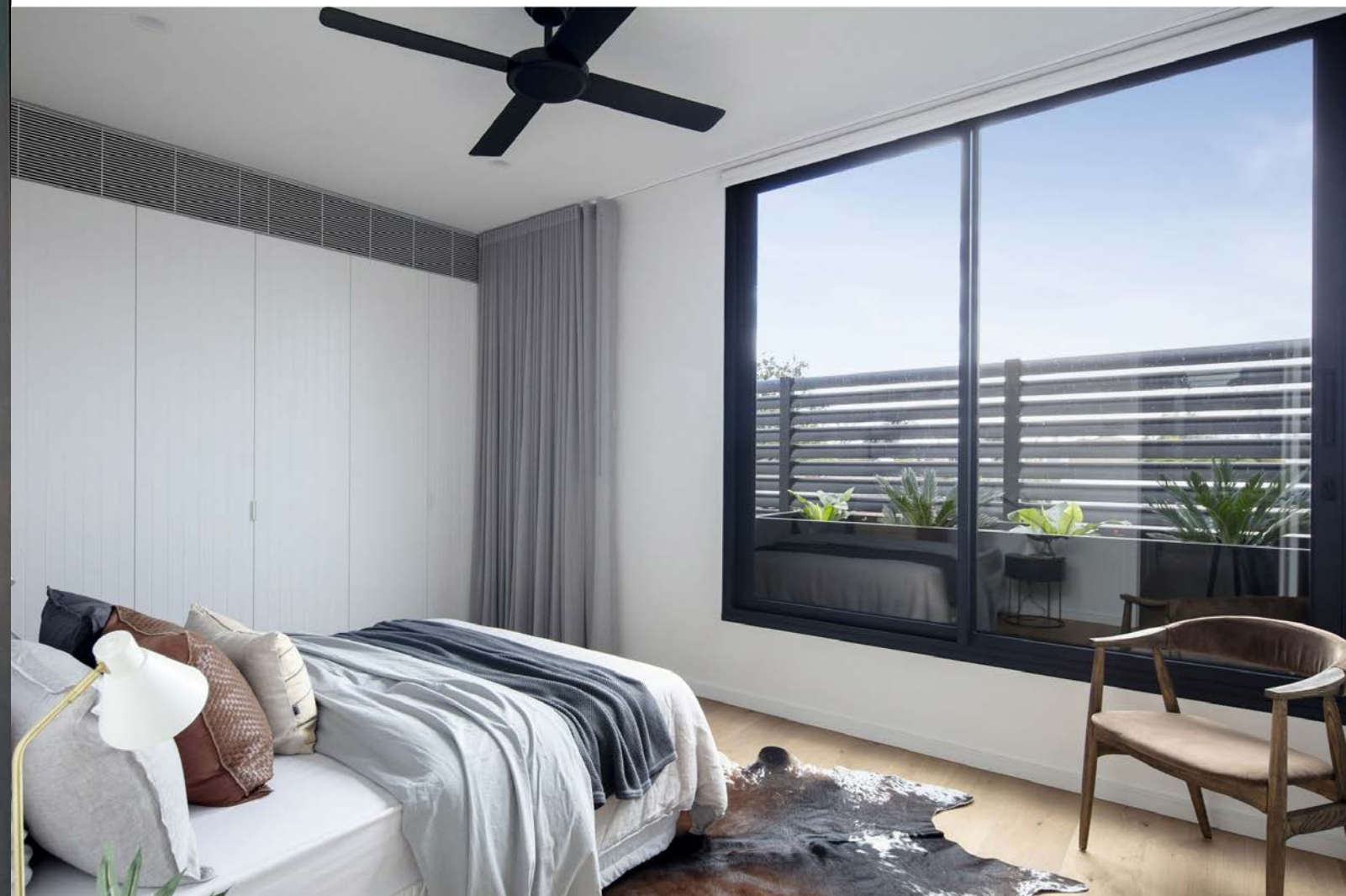
- \ Low maintenance profile design
- \ Dual, twin ball bearing rollers
- \ Slimline profile for unobstructed views
- \ Gasket corner seals for superior weather protection
- \ Energy efficient double glazed 5mm glazing - 9mm argon gas gap - 5mm glazing configuration as standard with custom configurations also available
- \ Flush locking system for superior security
- \ Anti-lift sash for security
- \ Customised designs available
- \ Sliding fly screen allowing for servery style windows
- \ Silicon wet seal gives a more durable design

SHIELD sliding windows are a popular choice, offering excellent ventilation in a cost-effective window solution.

SHIELD's range of double-glazed sliding windows forms the backbone of the shield range. Valued for their economical design and excellent ventilation, double glazed sliding windows are the optimal choice.

With a silicon sealed standard glazing configuration comprised of a 9mm argon gas gap, sliding windows are still able to achieve high-energy efficiency.

Sliding windows can also be customised to suit bush fire areas through the use of different glazing and screening options.



AWNING WINDOWS

- \ Resilient thermally improved profile design for increased energy efficiency and durability
- \ Mitred corners for aesthetic clean design
- \ Keyed winder lock system for simple operation
- \ Energy efficient double glazed 5mm glazing - 9mm argon gas gap - 5mm glazing configuration as standard with custom configurations also available
- \ Fixed fly screen option as standard
- \ Retractable fly screen options available
- \ Silicon wet seal gives a more durable design

SHIELD's range of awning windows is valued for its stylish look and energy-efficient design.

SHIELD's awning windows are available in a wide variety of sizes and configurations and can be customised to suit any opening.

An elegant design displaying mitred corners and a simple lock system gives SHIELD's range of awning windows a prominent place in the market.



FIXED WINDOWS

- \ Energy efficient double glazed 5mm glazing - 9mm argon gas gap - 5mm glazing configuration as standard with custom configurations also available
- \ Mitred, European inspired, thermally improved design for increased energy efficiency and aesthetics
- \ Silicon wet seal gives a more durable design

Perfect for coupling with other windows and door configurations, or alternatively as stand-alone fixed panel.

SHIELD's range of fixed windows can be customised to suit all openings.

BI-FOLD WINDOWS

- \ Multiple locking and sealing points for a secure weatherproof design
- \ Energy efficient double glazed 5mm glazing - 9mm argon gas gap - 5mm glazing configuration as standard with custom configurations also available
- \ Heavy-duty commercial inspired design for increased durability and low maintenance operation
- \ Rebated track system for low profile bottom track

Bi-fold windows are a popular choice for kitchen openings, as they allow large servery openings onto patios.

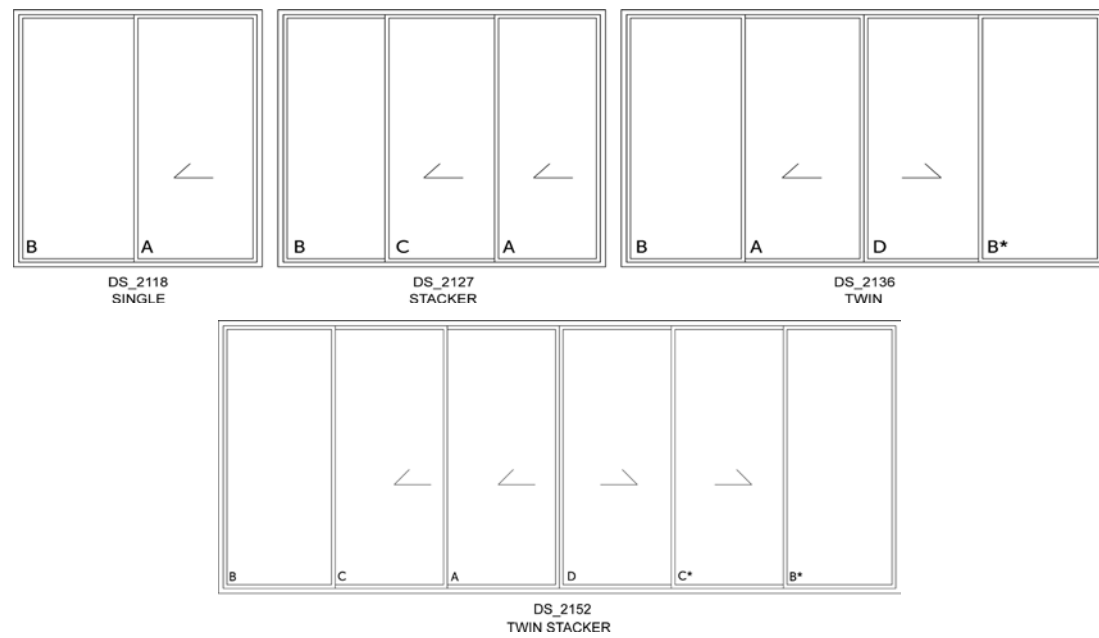
CASEMENT WINDOWS

- \ Energy efficient double glazed 5mm glazing - 9mm argon gas gap - 5mm glazing configuration as standard with custom configurations also available
- \ Mitred, European inspired, thermally improved design for increased energy efficiency and aesthetics
- \ Silicon wet seal gives a more durable design

Designed to meet standards for use in bush fire-prone areas upto BAL 29.

SHIELD's range of casement windows offers consumers excellent ventilation, secure locking and the option of external screening.

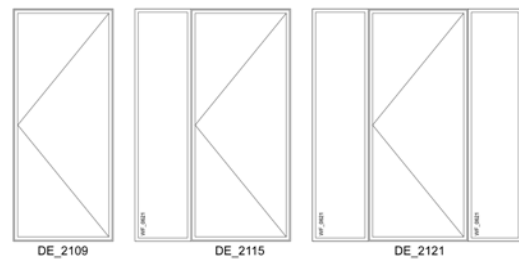
SLIDING DOORS - STANDARD STOCKED SIZES



Door Size	2100 x 1810	2100 x 2645	2100 x 3566	2100 x 5238
Revealed Size	2118 x 1848	2118 x 2683	2118 x 3604	2118 x 5276
Stud Opening	2130 x 1870	2130 x 2705	2130 x 3626	2130 x 5298

Standard door heights available are 2100mm high and 2360mm high
 Additional subsill available - add 13mm in height
 The opening directions can vary from left or right with both single and stacker door combinations
 Frame depths
 - Single and twin = 110mm
 - Stacker and twin stacker = 180mm
 The sizes indicated are our standard sizes but can be produced in any size from 1500mm to 6000mm
 Flyscreens are available with all frame types
Please note: All door revealed two sides and top only

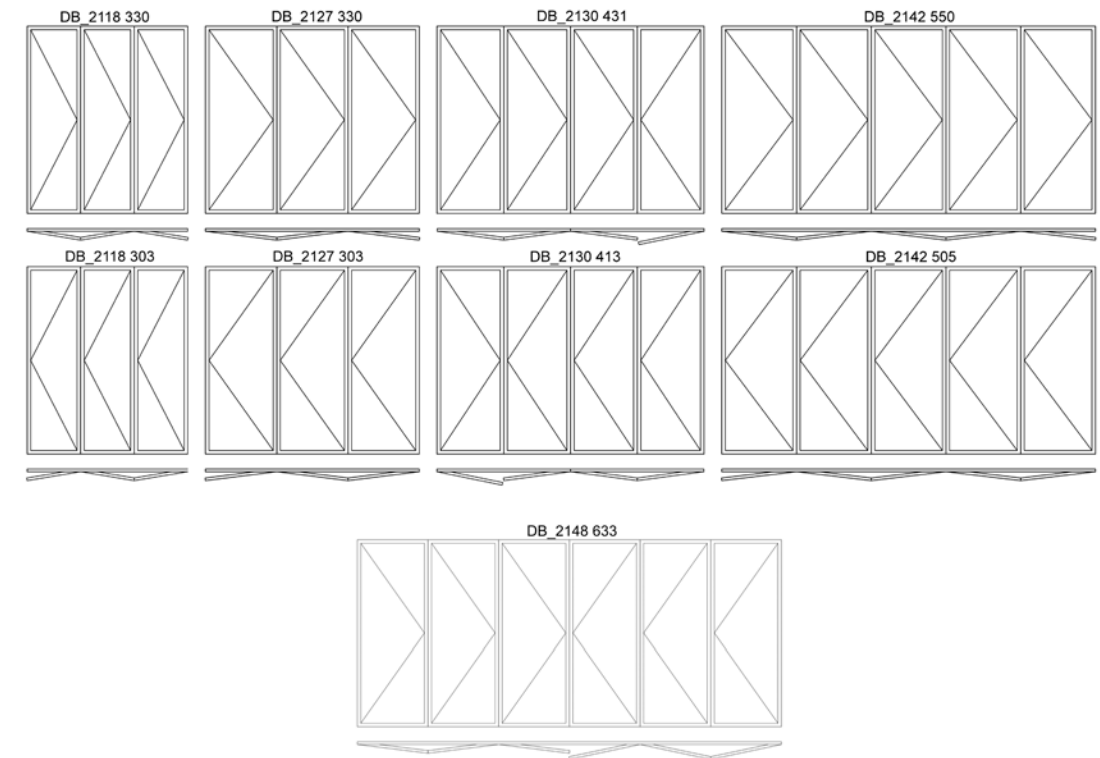
ENTRY DOORS



Door Size	2100 x 900	2100 x 1500	2100 x 2100
Revealed Size	2118 x 938	2118 x 1538	2118 x 2138
Stud Opening	2130 x 960	2130 x 1560	2130 x 2160

Standard door heights available are 2100mm high and 2360mm high.
 The sizes indicated are standard sizes and can be coupled to fixed and awning windows
 Additional subsill available - add 13mm in height
 Retractable flyscreen available to order
Please note: All door revealed two sides and top only

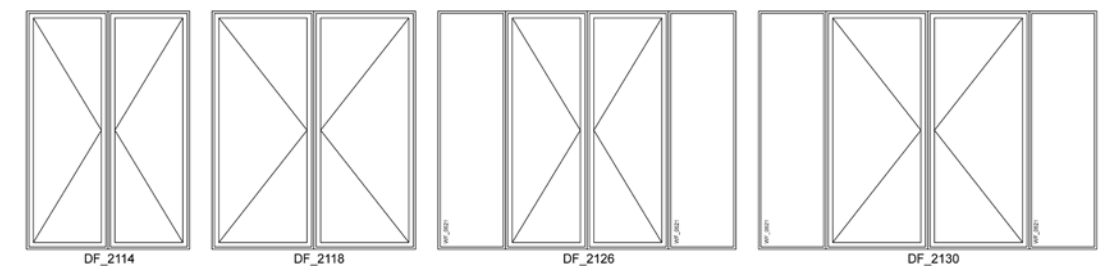
BI-FOLD DOOR



Door Size	2100 x 1810	2100 x 2710	2100 x 3010	2100 x 4210	2100 x 4810
Revealed Size	2118 x 1848	2118 x 2748	2118 x 3048	2118 x 4248	2118 x 4848
Stud Opening	2130 x 1870	2130 x 2770	2130 x 3070	2130 x 4270	2130 x 4870

Standard door heights available are 2100mm high and 2360mm high
 Additional subsill available - add 13mm in height
 The sizes indicated are our standard sizes and opening directions can vary from left or right with both single and stacker door combinations
 Bi-fold door frame depth is = 70mm
Please note: All door revealed two sides and top only

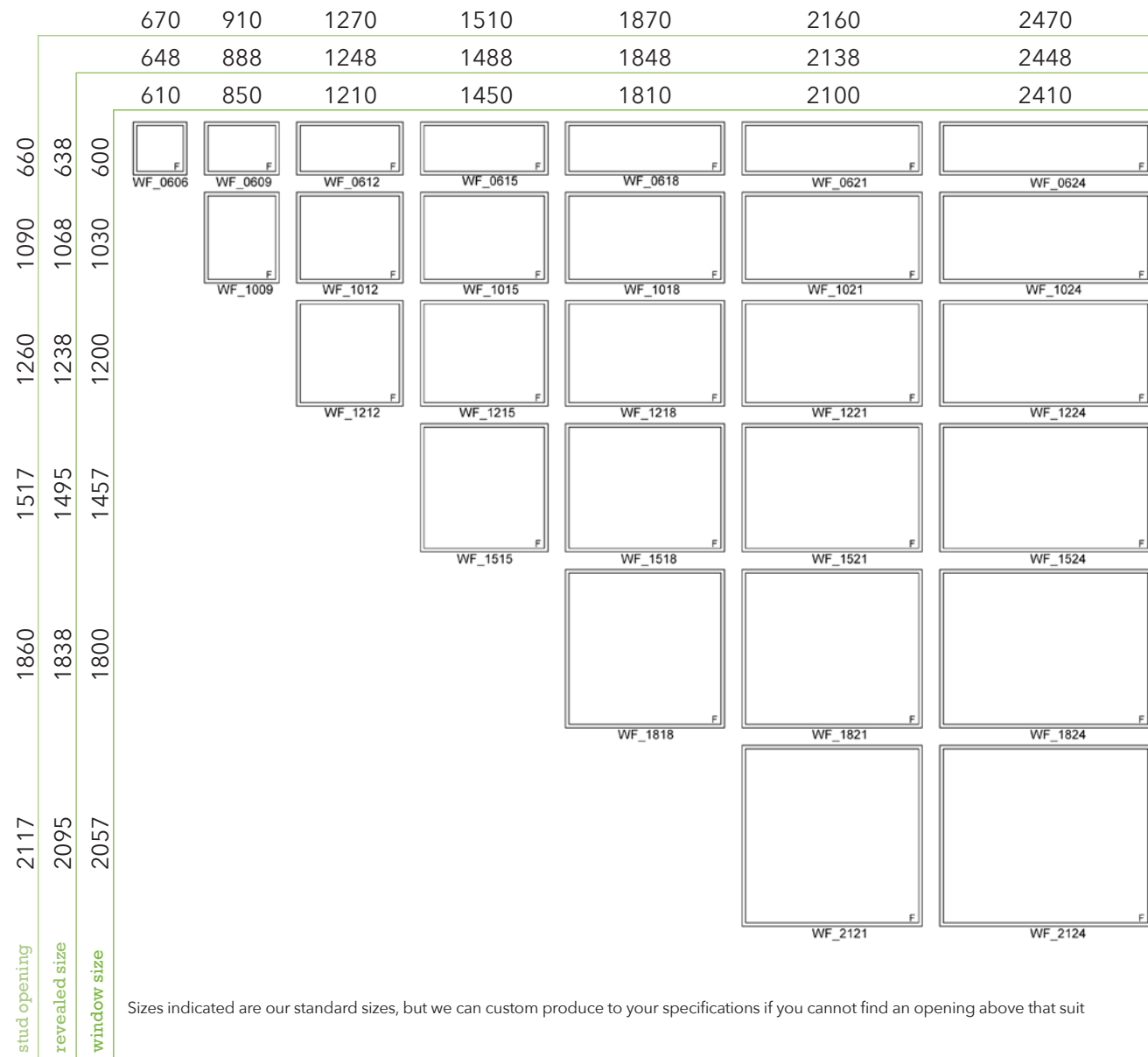
FRENCH DOORS



Door Size	2100 x 1450	2100 x 1810	2100 x 2650	2100 x 3010
Revealed Size	2118 x 1488	2118 x 1848	2118 x 2688	2118 x 3048
Stud Opening	2130 x 1510	2130 x 1870	2130 x 2710	2130 x 3070

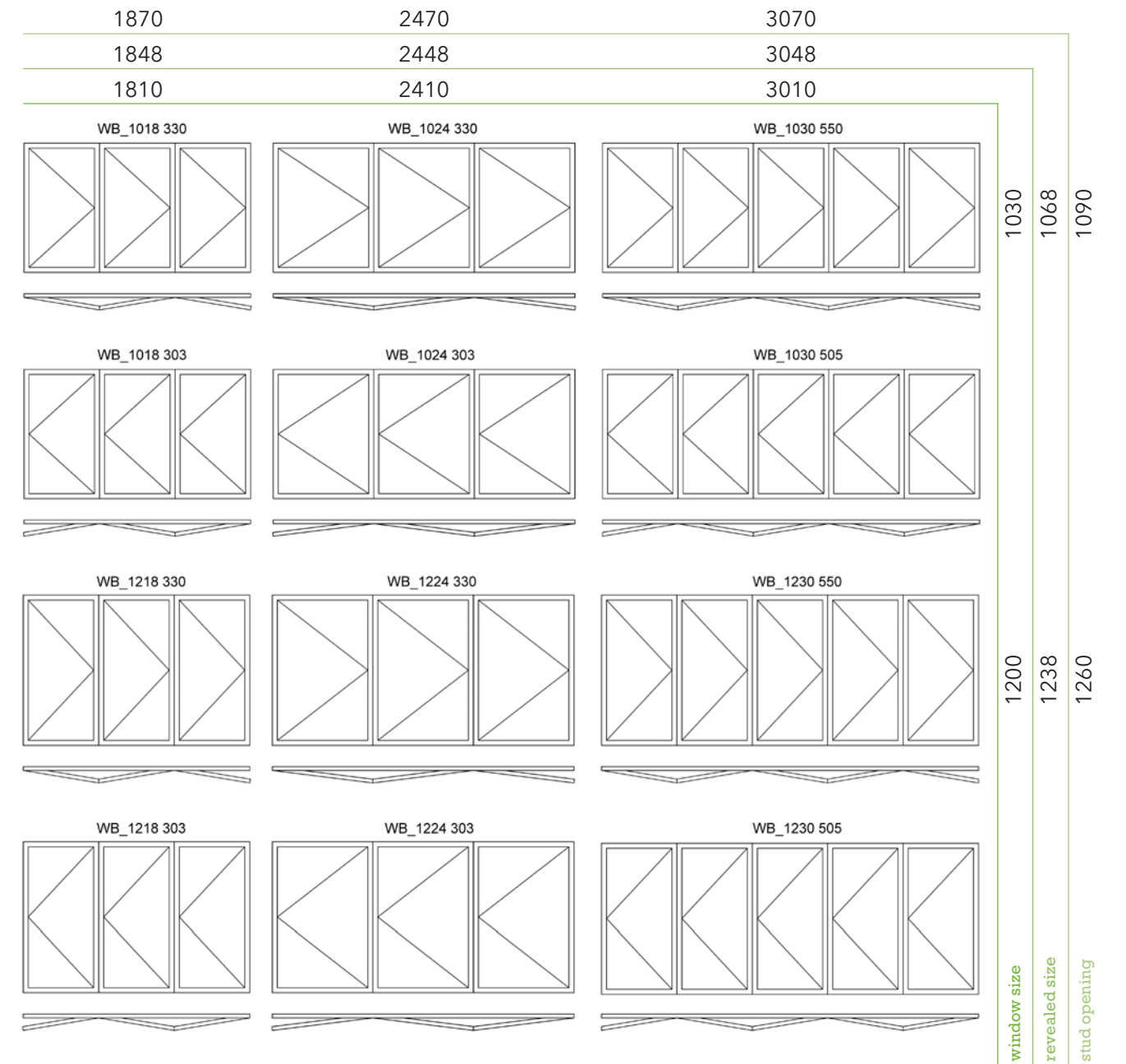
Standard door heights available are 2100mm high and 2360mm high
 The sizes indicated are standard sizes and can be coupled to fixed and awning windows
 Additional subsill available - add 13mm in height
Please note: All door revealed two sides and top only

FIXED WINDOWS



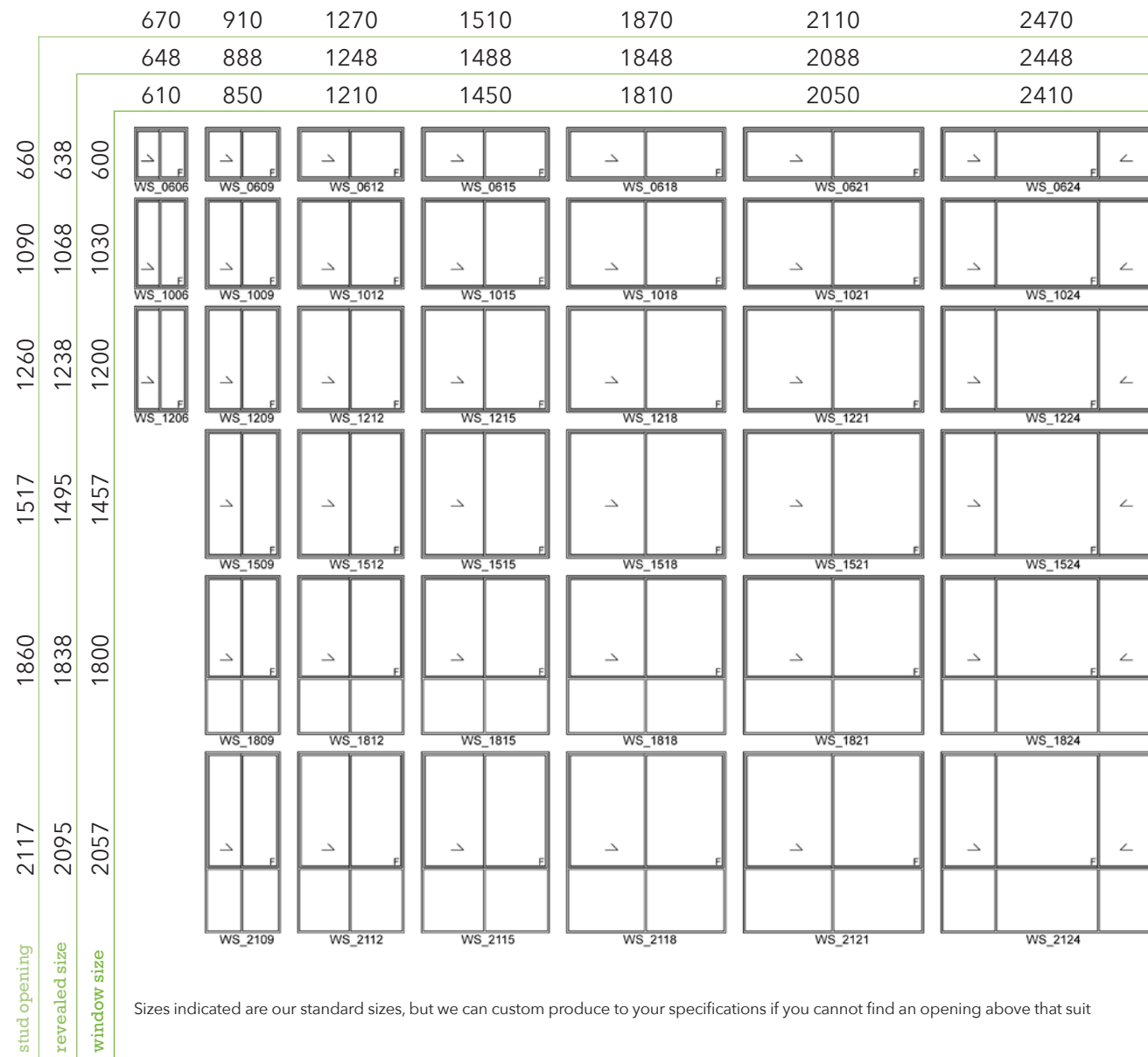
Sizes indicated are our standard sizes, but we can custom produce to your specifications if you cannot find an opening above that suit

BI-FOLD WINDOWS



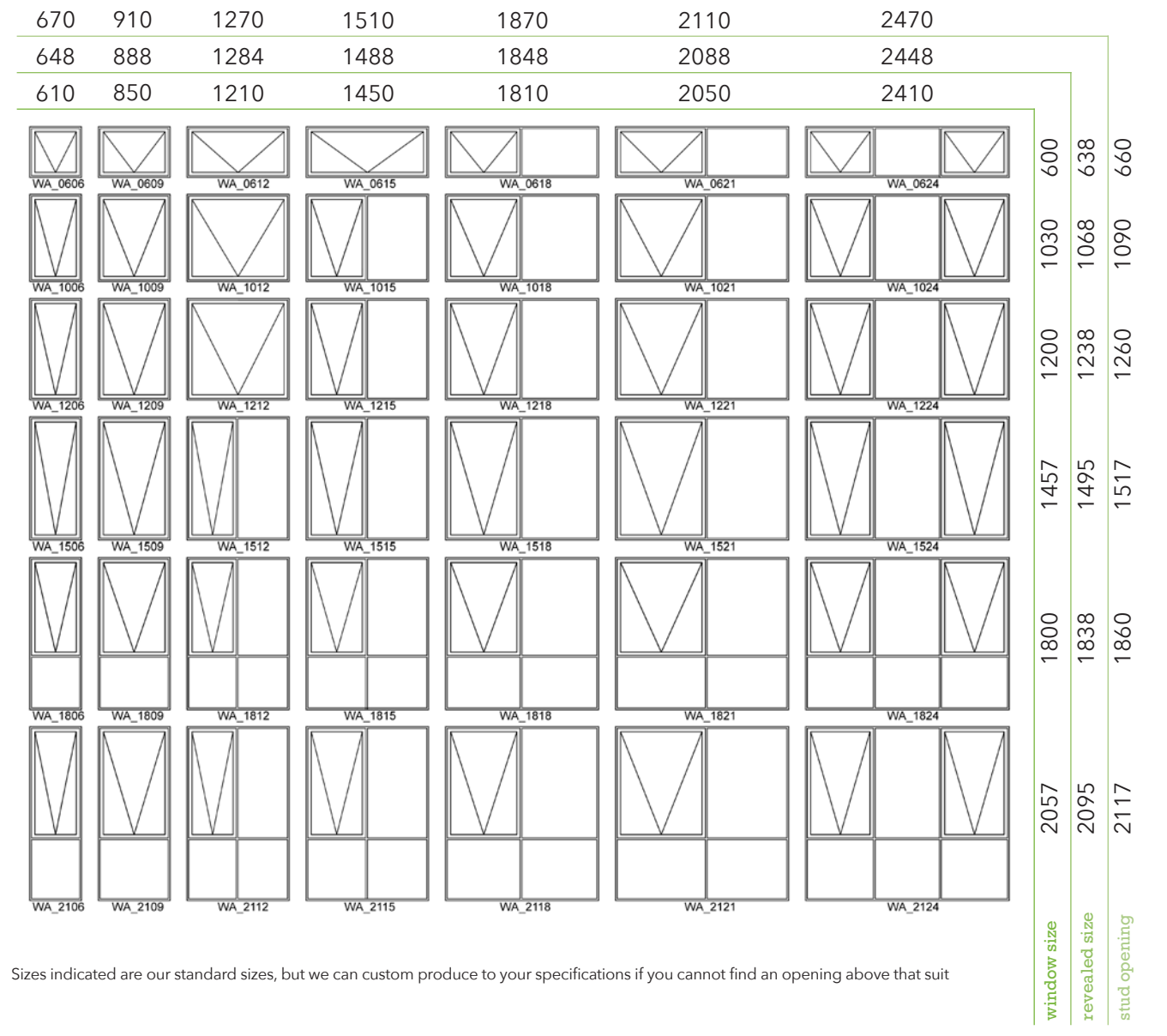
Sizes indicated are our standard sizes, but we can custom produce to your specifications if you cannot find an opening above that suit

SLIDING WINDOWS



Sizes indicated are our standard sizes, but we can custom produce to your specifications if you cannot find an opening above that suit

AWNING WINDOWS



Sizes indicated are our standard sizes, but we can custom produce to your specifications if you cannot find an opening above that suit

SHIELD DOORS AND WINDOWS GUARANTEE

SHIELD Doors and Windows have a factory-backed guarantee against defects arising from faulty workmanship or materials for a period of upto 6 years from date of delivery.

- \ 6 Years for framework and Galzing
- \ 1 Year guarantee on hardware (hinges, rollers & locks)

For further details refer to www.uptons.net.au

Maintenance Procedures for Aluminium Powder-Coat Surfaces

Cleaning by regularly washing the products in a warm detergent-based solution with a soft cloth or sponge is recommended.

The use of bristled brushes is not recommended as it can cause irreversible damage to the powder-coat finish.

A white spirit should be used to remove soiling without the use of a bristled or abrasive brush. At no time should a cleaning agent containing ketones, esters or alcohols be used.



**SHIELD
DOORS & WINDOWS
MELBOURNE**

2 Graystone Court,
Epping VIC 3076
Ph: 03) 8339 2252
melbourne@uptons.net.au

**SHIELD
DOORS & WINDOWS
HOBART**

312 Argyle Street,
North Hobart, TAS 7001
Ph: 03) 6234 4944
hobart@uptons.net.au

**THE BUNKER
ALBURY**

521 Wagga Road,
Lavington, NSW 2641
Ph: 02) 6025 4466
albury@uptons.net.au

**THE BUNKER
BRISBANE**

20 Chrome Court,
Burrpengary, QLD 4505
Ph: 07) 3093 5500
brisbane@bunker.net.au



SHIELD **THE BUNKER** **uptons**
doors & windows THE UPTON GROUP