

STRUCTAflor



**EXPOSURE
WARRANTY
EXTENDED TO
7 MONTHS**

Ultimate

STRUCTAflor Ultimate is an advanced particleboard flooring solution featuring a foil laminate on the underside of the board. This low emittance (high reflectance) metallised foil surface significantly reduces the radiative heat transfer across a suspended timber floor. Ultimate incorporates a termicide for added protection against termites and is easily identified by its blue edge coat.

**Australian
PANELS**

www.australianpanels.com.au



Responsible
Wood
AUSTRALIAN MADE



PEFC™
PEFC/21-31-145



AUSTRALIAN MADE
AND OWNED

FEATURES

Bushfire Attack Level (BAL)

- Ultimate has an increased Bushfire Attack Level rating (BAL) compared to normal particleboard flooring
- If subfloor is enclosed then Ultimate can be used for the highest BAL rating of BAL – FZ
- If subfloor is unenclosed then Ultimate can be used up to a BAL 29

Increased R Value (Insulation)

Ultimate provides a significant insulation R-value increase compared to normal STRUCTAflor YELLOWtongue flooring

Reduced Moisture Uptake

- 80% less moisture uptake through the bottom surface compared to other common wood subfloor products
- Less moisture uptake means better overall subfloor and floor covering performance, especially when building close to the ground
- Significantly reduced risk of moisture vapor transmission through the subfloor means far less issues with expansion, cupping and other moisture related problems when laying timber floor coverings such as solid, engineered, laminate and bamboo
- Significant reduction in mould growth potential during and after construction on both top and bottom surfaces

Termite Resistant H2

Ultimate is deemed to be a termite resistant building material under the Building Code of Australia and AS 3660.1.

Load Carrying Capability

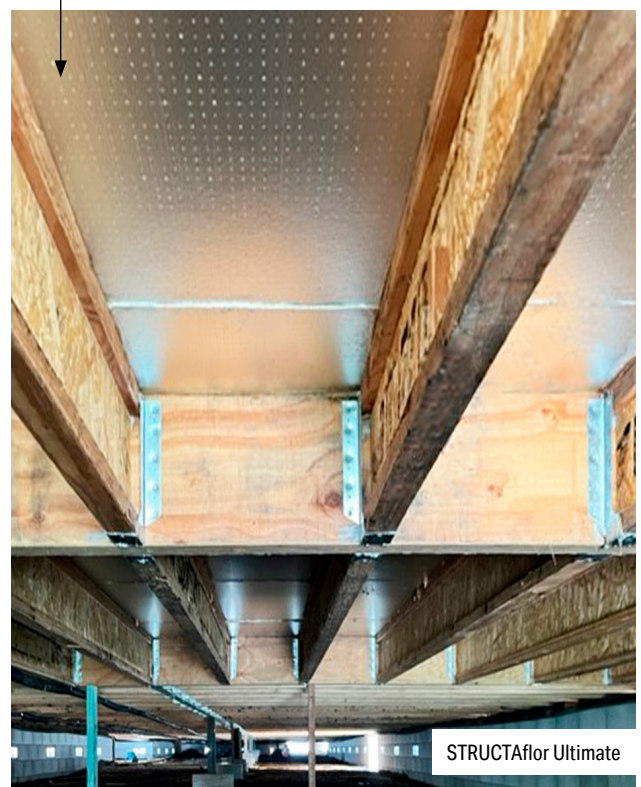
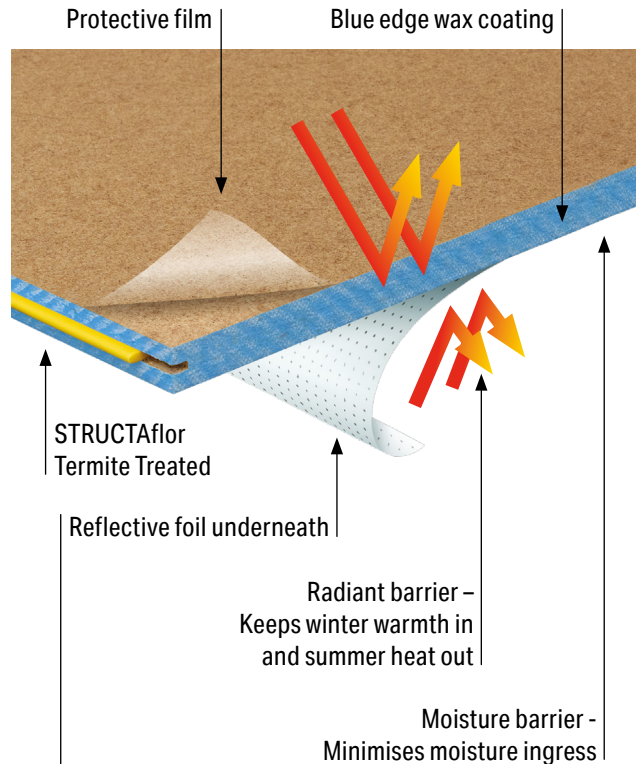
Ultimate comes in two thicknesses based upon what load factor is required:

- 19mm YELLOWtongue, 3600mm x 800mm
- 22mm REDtongue, 3600mm x 800mm



INSTALLATION

Scan the QR code for installation guide.





Scan the QR code to view
the full range of products

**Australian
PANELS**

www.australianpanels.com.au



Responsible
Wood



PEFC™
PEFC/21-31-145

