



CARAVAN & TINY HOME EDITION

Product Guide

www.bunker.net.au

2023 EDITION



How to KNOW

WHAT TO PUT IN YOUR CARAVAN AND TINY HOME

There is a delicate balance between weight and beauty; this guide will show you all products that The Bunker stores offer and all the essential information you need to know to get your next project up and going.

CONTENTS

FLOORS

- 04 *FORM PLY*
- 04 *FLOOR PLYWOOD*
- 05 *HYBRID FLOORING*

WALLS

- 06 - 07 *CARAVAN PLYWOOD*
- 07 *JOINER MOULDS*
- 08 *PINE LINING*
- 08 *PINE PLY*
- 09 *MARINE PLY*
- 09 *LIGHT WEIGHT PLY*
- 10 *EASY VJ*
- 11 *MR WET WALL*
- 11 *WALLART*

EXTERIOR

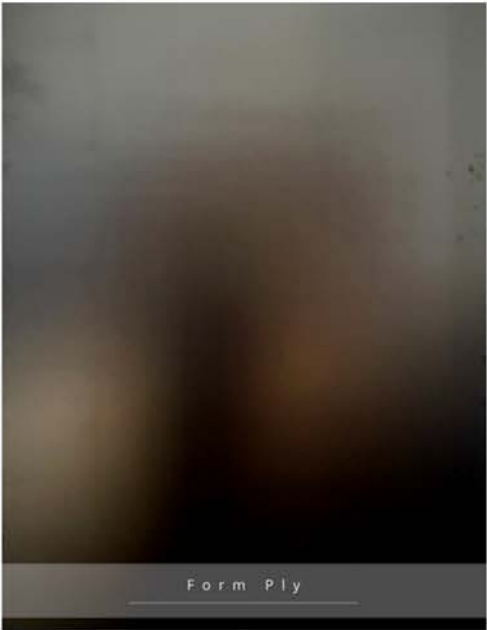
- 12 *BRACING PLY*
- 12 *SHADOWCLAD*
- 13 *WEATHERTEX*
- 13 *COLOURBOND*

WINDOWS & DOORS

- 14 *ALUMINIUM DOORS*
- 14 *ALUMINIUM WINDOWS*



FLOORS



FORM | FILM PLY

Form ply is a high-quality plywood panel produced structural F17 from PEFC-certified Eucalyptus hardwood and sealed with a phenolic resin overlay creating a weatherproof product ideal for floor base.

1800 x 1200 x 17mm - 12.5 kg per m2
 2400 x 1200 x 17mm - 12.5 kg per m2

This product is also available in a Film ply; this product has the same phenolic resin overlay, just made with a non-structural core.

2400 x 1200 x 12mm - 7.638 kg per m2
 2400 x 1200 x 17mm - 9.375 kg per m2



PLY FLOORING

2400 x 1200 - 2700 x 1200

Our pine T&G flooring ply sheets are perfect to use as the base of the floor. It's an all-purpose, heavy-duty plywood ideal for structural applications in various environments.

The sheets weigh Approx.

		2400 x 1200			2700 x 1200		
mm	15	17	19	15	17	19	
kg per m2	8.27	9.20	10.27	8.27	9.19	10.27	

FLOORS

Hybrid Flooring -Blackbutt



Project: Stay Tiny Co

HYBRID FLOORING

1420 x 180 x 6.5mm

Each box covers 2.045m²
Eight boards per pack

Packs weigh Approx. 10.6 kg per m²

It is 100% waterproof, stands up to all spills, and can be installed in wet areas such as bathrooms.



ANCHOR GREY



BLACKBUTT



SPOTTED GUM



ALABASTER



DRIFTWOOD



PEWTER

It is 100% waterproof, stands up to all spills, and can be installed in wet areas such as bathrooms.

Low maintenance with the surface coating technology ensures no need for additional surface treatments following installation. Acoustic qualities this flooring has excellent noise reduction properties and does not require an additional underlay. (Industry, leading, six stars rated).

Rigid core boards are incredibly hard-wearing and have high impact resistance; unlike wood or tile, this flooring won't splinter, warp or crack.

Quick and easy to install, all that is needed is a level, smooth, dry and dust-free subfloor. Our hybrid is a 100% float system and can be laid over most existing hard floor surfaces. Pet Friendly from muddy paws to 'accidents'- this flooring repels anything your pet can throw at it, making life much easier.



WALLS INTERNAL

White Caravan Ply



Project: Private

CARAVAN PLY

White & Textured

Specifically designed for caravans, this material is a single-sided panel backed with thin plywood and top coated with a polyester coating for better wearability.

These sheets can be used internally, along with the plastic joining strips, which will help you tidy up the edges of the panels.

This product must not be used in wet areas or where moisture may be an issue.

The sheets weigh Approx. 1.85 kg per m2



2440 x 1220 x 3.2mm

- Matt | Gloss

2440 x 1220 x 3.6mm

- Matt | Gloss

LIMITED STOCK AVAILABLE

2440 x 1220 x 3.2mm

- Embossed White & Grey

2440 x 1220 x 3.0mm

- Stipple



WALLS INTERNAL

CARAVAN PLY

Timber look

Paper overlay

2440 x 1220 x 2.7mm - 1.85 kg per m²

Stock can vary between stores



Plastic Joining Strips

JOINERS

White

H Mould

- 3.0mm x 2.44m / 4.0mm x 2.4m

Cap Mould

- 3.0mm x 2.44m / 4.5mm x 2.4m

External corner Mould

- 3.0mm x 2.44m / 4.5mm x 2.4m

Internal corner Mould

- 3.0mm x 2.44m / 4.5mm x 2.4m

Shadow line (Black)

- 6mm x 3m

WALLS INTERNAL

Pine Lining Board 321



Project: Stay Tiny Co

PINE LINING

140 x 12 x 4800m

Plantation Radiata Pine Lining boards
Give your space a seamless timber look; this Pine lining is a tongue and groove finish for easy installation. These boards are sustainable plantation-grown Radiata Pine.

This product has a smooth, uniform appearance and is precision milled for a classic timber look.

The boards weigh Approx. 3.7 kg per m²



BD Structural Pine Ply

SELEX BD PINE PLY

2400 x 1200

Our Pine Plywood is of high visual quality, high strength, and high versatility, with a B/D surface finish, which allows its use in various uses such as furniture, interior cladding, DIY projects, and construction.

Suitable for walls and cabinetry.

The sheets weigh Approx.

mm	7	9	12	15	17	25
kg per m ²	3.85	4.97	6.64	8.27	9.38	13.75

WALLS INTERNAL

Hardwood Marine Ply



Project: Base Cabin

HARDWOOD MARINE PLY

2440 x 1220

Marine Ply is manufactured to the highest standard, made from several layers of wood veneers bound together with water boiled proof (WBP) - Phenol Glue; this means that panel can be exposed to weather, water and moisture for an extended period without delamination.

The sheets weigh Approx.

mm	4	6	9	12	15	18
kg per m2	2.45	3.67	5.49	7.30	9.12	10.9



Light Weight Ply

LIGHT WEIGHT PLY

2440 x 1220

Lightweight plywood made up of Falcata species timber. Falcata is a part of the hardwood family; it is up to 35% lighter than standard plywood and typically lighter in appearance than many traditional hardwood species. Perfect for joinery applications such as laminated bench-tops substrates and bench seats in caravans.

The sheets weigh Approx.

mm	9	12	15	18
kg per m2	3.70	5.05	6.4	7.40

WALLS INTERNAL

Easy Craft Panels



Project: Aussie Tiny Houses

EASY CRAFT LINING

www.easycraft.com.au

The Easycraft panels provide a traditional and contemporary style to any home, perfect for dressing up walls and ceilings with elegance and refinement.

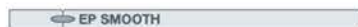
Made from MDF VJ panels are easy to install with the tongue and groove joining system and pre-primed for easy paint application.

The boards weigh Approx. 6.7 kg per m²

Length	2.4m	2.7m	3.0m	3.6m	4.5m
--------	------	------	------	------	------

decorative profiles

easypanel[®]



easygroove[®]
300



easyvj[®]
100



easygroove[®]
random



easyvj[®]
150



easyline[®]



easygroove[®]
150



easyregency[®]



Project: Aussie Tiny Houses



WALLS INTERNAL

BATHROOM



MR WET WALL

www.mrwetwall.com

The Wet Wall panels are cost-effective, easy to install and the perfect alternative to tiles. These panels are ideal to use in bathrooms, bedrooms, laundries, shower areas, changing facilities & food prep areas.

100% mould resistant | easy to wipe clean | anyone can install! | panels come with a 10 year guarantee

2400mm x 1000mm x 10mm

The sheets weigh Approx. 4.59 kg per m2



Wall Art - New York White (Tile)



Project: Aussie Tiny Houses

WALLART

2400 x 1200 x 3.0mm

The WallART panels are durable, water resistant, simple to install and available in various designs to suit any home style.

This panel is suitable for bathrooms, laundries and shower recesses. Made from high-pressure laminate that will not discolour or fade, with 11 options to select from, there is an option for everyone.

The sheets weigh Approx. 4.35 kg per m2

WALLS EXTERNAL



HARDWOOD BRACING

F22 structurally rated

The Hardwood bracing ply is made especially for the structural bracing of houses. It's made with an 'A' bond glue line.

Plywood Bracing is suitable for use in walls and roof bracing applications.

The sheets weigh Approx. 2.91 kg per m2

Available in

	2440 x 4mm		2745 x 4mm		3050 x 4mm	
mm	0.9	1.2	0.9	1.2	0.9	1.2

Shadow Clad



Project: Little Cove Campers

SHADOWCLAD

Raw

This panel is manufactured from sustainably-grown plantation pine. Shadowclad is an uncoated material suitable for painting to add your unique look.

It's an external product with an LOSP treatment ideal for external applications exposed to the weather.

The sheets weigh Approx. 6.62 kg per m2

Available in

Groove - 2440 x 1216 x 12mm

Groove - 2745 x 1216 x 12mm

Flashing is also available in-store.

WALLS EXTERNAL

SPECIAL ORDER

Weathertex Cladding



Project: Stay Tiny Co

WEATHERTEX

www.weathertex.com.au/

Weathertex is lightweight, natural timber suitable for interior & exterior wall cladding is 100% Australian-made and owned with a better than zero carbon footprint.

Made from 97% natural timber and 3% natural wax, the Weathertex products are 100% natural and termite resistant.

Colorbond



Project: Stay Tiny Co

COLORBOND

colorbond.com/products/walling

Colorbond is a sustainable option for your project, designed with thermal efficiency, making your space more comfortable.

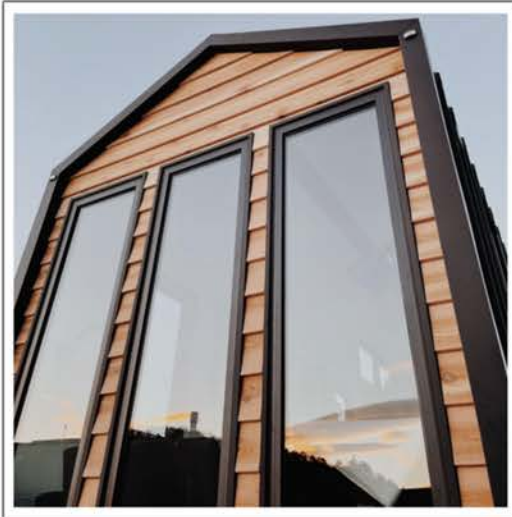
Colorbond is Inspired by the natural colours of Australia, selected from some of the unique landscapes designed by Australians for Australians.

This timeless product will make the perfect finish for your space.



WINDOWS & DOORS

Fixed Window



Project: Tasmanian Mini Houses & Trailers

Entry Door



Project: Tasmanian Mini Houses & Trailers

DOUBLE GLAZED

Aluminium

SHIELD's range of aluminium windows is available in a wide variety of standard sizes and configurations suitable for all tiny homes.

A practical and good-looking addition to any home, SHIELD's windows are available in matte black, silver, and white aluminium frames.

Double-glazed windows are manufactured with two layers of high-quality glass. These glass panes are separated by a space filled with inert gases.

The primary function of such window types is to provide better sound and thermal insulation to your house.

Our double glazed Doors and Windows range includes:

Aluminium Windows

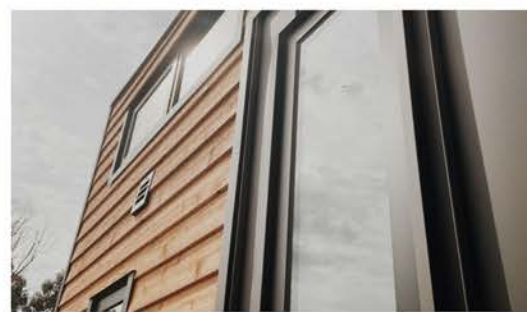
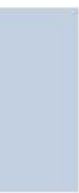
- Awning Windows
- Sliding Windows
- Fixed Windows
- Bifold Windows

Aluminium Doors

- Sliding Doors
- French & Entry Doors
- Bi-Fold Doors



SPOT OF INSPIRATION



WHERE TO BUY.

QUEENSLAND

Brisbane: 07) 3093 5500 | 20 Chrome Court, Burpengary
Beerwah: 07) 5439 0076 | 16 Moroney Place, Beerwah
Doonan: 07) 5470 1800 | 667 Noosa Eumundi Road, Doonan

NEW SOUTH WALES

Albury: 02) 6025 4466 | 521 Wagga Road, Lavington

VICTORIA

Melbourne: 03) 8339 2252 | 439 Cooper Street, Epping

TASMANIA

Cambridge: 03) 6248 5777 | 10 Kennedy Drive, Cambridge
Hobart: 03) 6234 4944 | 312 Argyle Street, Hobart
Mornington: 03) 6244 2422 | 20 Mornington Road, Mornington

